

Boys' Sweet Sixteen Action

1995 Championship Game

**BRECKINRIDGE
COUNTY**

VS.

PLEASURE RIDGE PARK

March 18, 1995

**Rupp Arena
Lexington, Kentucky**

OFFICIAL STATISTICS BOOKLET

OFFICIAL NFSHS BASKETBALL BOX SCORE: *** FINAL ***
 Date: 03-18-95 Site:BOYS' SWEET 16, LEXINGTON

VISITORS (Last Name, First)

NO.	NAME	Tot FG		3-POINT		FT	FTA	Rebounds			PF	TP	A	TO	BLK	S	TIME
		FG	FGA	FG	FGA			OFF	DEF	TOT							
32	NELSON, GILWAN	8	16	0	2	4	4	4	1	5	1	20	1	0	0	1	24:23
43	HOOVER, SHAWN	2	4	0	0	3	6	5	3	8	3	7	0	1	0	1	13:18
42	LOCKHART, MIKE	0	4	0	0	4	4	3	4	7	3	4	1	1	3	0	15:08
15	TAYLOR, CHARLES	5	13	3	8	0	0	2	1	3	4	13	5	5	0	1	29:23
23	TAYLOR, DOMINICK	0	1	0	0	1	3	0	0	0	2	1	1	1	0	0	15:17
30	IVORY, WILLIE	2	9	0	4	1	2	2	2	4	2	5	1	2	1	0	20:51
25	MIMS, LARON	1	2	0	0	0	0	1	2	3	1	2	0	1	0	1	12:18
31	BEDFORD, GREG	1	1	0	0	1	1	0	0	0	0	3	0	0	1	1	6:11
21	FEY, BRANDON	0	2	0	0	3	4	1	0	1	3	3	0	2	0	0	9:15
10	MCGOVERN, DAVID	2	5	1	4	0	0	1	0	1	1	5	0	1	0	1	13:56
TEAM REBOUNDS (INCLUDED IN TOTALS)																	
TOTALS		21	57	4	18	17	24	21	13	34	20	63	9	14	5	6	160
Percentages: Game				FG						3-PT.							
Period 1						5/17		29.4%			0/4		0.0%			2/2	100.0%
Period 2						5/12		41.7%			1/4		25.0%			4/8	50.0%
Period 3						4/10		40.0%			1/4		25.0%			2/4	50.0%
Period 4						7/18		38.9%			2/6		33.3%			9/10	90.0%

HOME (Last Name, First)

NO.	NAME	Tot FG		3-POINT		FT	FTA	Rebounds			PF	TP	A	TO	BLK	S	TIME
		FG	FGA	FG	FGA			OFF	DEF	TOT							
34	WHITWORTH, JARED	2	2	0	0	2	2	1	3	4	5	6	3	3	1	2	22:10
42	SILLS, JAY	8	17	1	3	2	2	2	3	5	4	19	3	2	1	0	32:00
32	MATTINGLY, ADAM	9	13	0	0	1	2	2	7	9	3	19	3	4	1	3	26:40
12	PAYNE, BRADLEY	2	2	1	1	2	2	0	1	1	3	7	3	0	0	0	31:04
20	CRITCHELOW, PAT	5	8	1	1	4	6	1	3	4	4	15	4	4	0	2	32:00
41	WILLIAMS, CARL	2	3	0	0	0	0	0	0	0	0	4	0	1	0	0	12:35
50	CALIST, JON	0	0	0	0	0	0	0	0	0	0	0	0	0	0	0	2:55
40	MATTINGLY, MATT	0	0	0	0	0	0	0	0	0	0	0	0	0	0	0	0:36
TEAM REBOUNDS (INCLUDED IN TOTALS)																	
TOTALS		28	45	3	5	11	14	6	17	23	19	70	16	14	3	7	160
Percentages: Game				FG						3-PT.							
Period 1						8/16		50.0%			2/2		100.0%			1/1	100.0%
Period 2						7/9		77.8%			0/2		0.0%			0/0	0.0%
Period 3						8/12		66.7%			1/1		100.0%			1/2	50.0%
Period 4						5/8		62.5%			0/0		0.0%			9/11	81.8%

OFFICIALS: Glenn Brown, Roger Cross, Alt-Tom Hummell
 Technicals: None

SCORE BY PERIODS

PLEASURE RIDGE PARK	12	15	11	25	=	63
BRECKINRIDGE COUNTY	19	14	18	19	=	70

Attendance: 15,965

COMMENTS: POINTS OFF TURNOVERS

PLEASURE RIDGE PARK 17 BRECKINRIDGE COUNTY 14 PLEASURE RIDGE PARK 15 BRECKINRIDGE COUNTY 8

SECOND CHANCE POINTS

Produced by the KHSAA SWEET 16 Stat Crew with FINAL III - a Product of Stone Consulting (606)273-3941

PLEASURE RIDGE PARK "PANTHERS" vs BRECKINRIDGE COUNTY "FIGHTING TIGERS"
1st Half Play by Play

PAGE : 1

Tip off at 8:00 P.M. on 03/18/95 at BOYS' SWEET 16, LEXINGTON
Produced by the KHSAA SWEET 16 Season of Penn Service (606)273-3941
FIRST TFI is a product of STONE CONSULTING SERVICE

BRECKINRIDGE COUNTY					Time	Score	PLEASURE RIDGE PARK	Player	Team		
WHITWORTH, JARED, SILLS, JAY, MATTINGLY, ADAM, PAYNE, BRADLEY, CRITCHELOW, PAT							NELSON, GILWAN, HOOVER, SHAWN, LOCKHART, MIKE, TAYLOR, CHARLES, TAYLOR, DOMINICK				
Ball to FIGHTING TIGERS					1	7:01	Foul on TAYLOR, CHARLES	1	1		
					1	6:56	Foul on HOOVER, SHAWN	1	2		
					1	6:15	Foul on LOCKHART, MIKE	1	3		
1-2	50.0%	1-5	20.0%	4 ft Lane Bank by SILLS, JAY	1	5:40	0-2* Follow Layup by HOOVER, SHAWN	1-2	50.0%	1-5	20.0%
					1	5:10	0-4* Follow Layup by HOOVER, SHAWN	2-4	50.0%	2-9	22.2%
					1	5:06	Foul on HOOVER, SHAWN	2		4	
					1	5:06	Sub In: IVORY, WILLIE Out: HOOVER, SHAWN				
					1	5:06	*2-4				
					1	4:21	Foul on LOCKHART, MIKE	2		5	
					1	4:01	Sub In: MIMS, LaRON Out: TAYLOR, DOMINICK				
1-3	33.3%	2-8	25.0%	Layup Off Fast Break by MATTINGLY, ADAM	1	3:53	2-6* Layup Off Fast Break by MIMS, LaRON	1-1	100%	3-13	23.0%
				Assist by CRITCHELOW, PAT	1	3:42	*4-6				
					1	3:42	Foul on LOCKHART, MIKE	3		6	
					1	3:42	Sub In: BEDFORD, GREG Out: LOCKHART, MIKE				
1-1	100%	1-1	100%	MATTINGLY, ADAM, 1 Free Throw made	1	3:42	*5-6				
1-1	100%	3-9	33.3%	Driving Layup by WHITWORTH, JARED	1	3:11	*7-6				
				Assist by PAYNE, BRADLEY							
					1	2:50	7-8* Driving Layup by NELSON, GILWAN	1-3	33.3%	4-14	28.5%
							Assist by TAYLOR, CHARLES	1		1	
					1	2:50	7-9* NELSON, GILWAN, 1 Free Throw made	1-1	100%	1-1	100%
2-2	100%	4-12	33.3%	Follow Tip by WHITWORTH, JARED	1	2:27	*9-9				
				Foul on WHITWORTH, JARED	1	2:20					
					1	2:18	9-11* Turnaround Layup by BEDFORD, GREG	1-1	100%	5-15	33.3%
							Assist by IVORY, WILLIE	1		2	
					1	2:18	Sub In: FEY, BRANDON Out: NELSON, GILWAN				
2-5	40.0%	5-13	38.4%	3 pt 22 ft Right Angle Jump shot by SILLS, JAY	1	2:18	9-12* BEDFORD, GREG, 1 Free Throw made	1-1	100%	2-2	100%
				Assist by WHITWORTH, JARED	1	1:53	*12-12				
1-4	25.0%	6-14	42.8%	Driving Layup by CRITCHELOW, PAT	1	1:33	*14-12				
				Assist by MATTINGLY, ADAM							
1-1	100%	7-15	46.6%	Driving Layup by PAYNE, BRADLEY	1	0:37	*16-12				
				Assist by WHITWORTH, JARED							
					1	0:28	Player Control Foul on FEY, BRANDON	1		7	
					1	0:28	Sub In: McGOVERN, DAVID Out: TAYLOR, CHARLES				
					1	0:28	Sub In: NELSON, GILWAN Out: BEDFORD, GREG				
2-2	100%	8-16	50.0%	3 pt Shot by PAYNE, BRADLEY	1	0:18	*19-12				
				Assist by WHITWORTH, JARED							

Player	Team	BRECKINRIDGE COUNTY			Time	Score	PLEASURE RIDGE PARK	Player	Team
WHITWORTH, JARED, SILLS, JAY, MATTINGLY, ADAM, PAYNE, BRADLEY, CRITCHELOW, PAT							McGOVERN, DAVID, NELSON, GILWAN, HOOVER, SHAWN, MIMS, LaRON, FEY, BRANDON		
3-6	50.0%	9-17	52.9%	Layup Off Fast Break by SILLS, JAY	2	7:10	19-14*	1-1	100% 6-19 31.5%
				Assist by MATTINGLY, ADAM	2	6:51	*21-14		
				Foul on MATTINGLY, ADAM					
2-4	50.0%	10-18	55.5%	Dunk Off Fast Break by MATTINGLY, ADAM	2	6:39			
				Assist by SILLS, JAY	2	6:39			
4-7	57.1%	11-19	57.8%	12 ft Lane Jump shot by SILLS, JAY	2	6:39	21-15*	1-2	50.0% 3-4 75.0%
				Foul on SILLS, JAY	2	6:31	*23-15		
				Sub In: WILLIAMS, CARL Out: PAYNE, BRADLEY					
				Foul on WHITWORTH, JARED					
5-8	62.5%	12-20	60.0%	4 ft Lane Jump shot by SILLS, JAY	2	5:18	*25-15		
				Assist by MATTINGLY, ADAM	2	5:07			
				Sub In: PAYNE, BRADLEY Out: WHITWORTH, JARED					
1-1	100%	13-21	61.9%	Layup Off Fast Break by WILLIAMS, CARL	2	5:07	25-17*	3-3	100% 5-6 83.3%
				Assist by SILLS, JAY	2	5:07			
				Sub In: IVORY, WILLIE Out: FEY, BRANDON					
3-5	60.0%	14-22	63.6%	Driving Layup by MATTINGLY, ADAM	2	5:07			
				Assist by CRITCHELOW, PAT	2	4:47			
				Sub In: HOOVER, SHAWN, 2 Free Throws missed both					
				Sub In: McGOVERN, DAVID Out: TAYLOR, DOMINICK					
				Sub In: TAYLOR, CHARLES Out: McGOVERN, DAVID					
				Sub In: TAYLOR, DOMINICK Out: MIMS, LaRON					
				Sub In: HOOVER, SHAWN, 2 Free Throws missed 1st made 2nd					
				Sub In: McGOVERN, DAVID Out: TAYLOR, DOMINICK					
				Sub In: WILLIAMS, CARL Out: PAYNE, BRADLEY					
				Foul on WHITWORTH, JARED					
				Sub In: PAYNE, BRADLEY Out: WHITWORTH, JARED					
				Sub In: TAYLOR, CHARLES Out: McGOVERN, DAVID					
				Sub In: McGOVERN, DAVID Out: TAYLOR, DOMINICK					
				Sub In: TAYLOR, CHARLES Out: McGOVERN, DAVID					
				Sub In: McGOVERN, DAVID Out: TAYLOR, DOMINICK					
				Sub In: TAYLOR, CHARLES Out: McGOVERN, DAVID					
				Sub In: McGOVERN, DAVID Out: TAYLOR, DOMINICK					
				Sub In: TAYLOR, CHARLES Out: McGOVERN, DAVID					
				Sub In: McGOVERN, DAVID Out: TAYLOR, DOMINICK					
				Sub In: TAYLOR, CHARLES Out: McGOVERN, DAVID					
				Sub In: McGOVERN, DAVID Out: TAYLOR, DOMINICK					
				Sub In: TAYLOR, CHARLES Out: McGOVERN, DAVID					
				Sub In: McGOVERN, DAVID Out: TAYLOR, DOMINICK					
				Sub In: TAYLOR, CHARLES Out: McGOVERN, DAVID					
				Sub In: McGOVERN, DAVID Out: TAYLOR, DOMINICK					
				Sub In: TAYLOR, CHARLES Out: McGOVERN, DAVID					
				Sub In: McGOVERN, DAVID Out: TAYLOR, DOMINICK					
				Sub In: TAYLOR, CHARLES Out: McGOVERN, DAVID					
				Sub In: McGOVERN, DAVID Out: TAYLOR, DOMINICK					
				Sub In: TAYLOR, CHARLES Out: McGOVERN, DAVID					
				Sub In: McGOVERN, DAVID Out: TAYLOR, DOMINICK					
				Sub In: TAYLOR, CHARLES Out: McGOVERN, DAVID					
				Sub In: McGOVERN, DAVID Out: TAYLOR, DOMINICK					
				Sub In: TAYLOR, CHARLES Out: McGOVERN, DAVID					
				Sub In: McGOVERN, DAVID Out: TAYLOR, DOMINICK					
				Sub In: TAYLOR, CHARLES Out: McGOVERN, DAVID					
				Sub In: McGOVERN, DAVID Out: TAYLOR, DOMINICK					
				Sub In: TAYLOR, CHARLES Out: McGOVERN, DAVID					
				Sub In: McGOVERN, DAVID Out: TAYLOR, DOMINICK					
				Sub In: TAYLOR, CHARLES Out: McGOVERN, DAVID					
				Sub In: McGOVERN, DAVID Out: TAYLOR, DOMINICK					
				Sub In: TAYLOR, CHARLES Out: McGOVERN, DAVID					
				Sub In: McGOVERN, DAVID Out: TAYLOR, DOMINICK					
				Sub In: TAYLOR, CHARLES Out: McGOVERN, DAVID					
				Sub In: McGOVERN, DAVID Out: TAYLOR, DOMINICK					
				Sub In: TAYLOR, CHARLES Out: McGOVERN, DAVID					
				Sub In: McGOVERN, DAVID Out: TAYLOR, DOMINICK					
				Sub In: TAYLOR, CHARLES Out: McGOVERN, DAVID					
				Sub In: McGOVERN, DAVID Out: TAYLOR, DOMINICK					
				Sub In: TAYLOR, CHARLES Out: McGOVERN, DAVID					
				Sub In: McGOVERN, DAVID Out: TAYLOR, DOMINICK					
				Sub In: TAYLOR, CHARLES Out: McGOVERN, DAVID					
				Sub In: McGOVERN, DAVID Out: TAYLOR, DOMINICK					
				Sub In: TAYLOR, CHARLES Out: McGOVERN, DAVID					
				Sub In: McGOVERN, DAVID Out: TAYLOR, DOMINICK					
				Sub In: TAYLOR, CHARLES Out: McGOVERN, DAVID					
				Sub In: McGOVERN, DAVID Out: TAYLOR, DOMINICK					
				Sub In: TAYLOR, CHARLES Out: McGOVERN, DAVID					
				Sub In: McGOVERN, DAVID Out: TAYLOR, DOMINICK					
				Sub In: TAYLOR, CHARLES Out: McGOVERN, DAVID					
				Sub In: McGOVERN, DAVID Out: TAYLOR, DOMINICK					
				Sub In: TAYLOR, CHARLES Out: McGOVERN, DAVID					
				Sub In: McGOVERN, DAVID Out: TAYLOR, DOMINICK					
				Sub In: TAYLOR, CHARLES Out: McGOVERN, DAVID					
				Sub In: McGOVERN, DAVID Out: TAYLOR, DOMINICK					
				Sub In: TAYLOR, CHARLES Out: McGOVERN, DAVID					
				Sub In: McGOVERN, DAVID Out: TAYLOR, DOMINICK					
				Sub In: TAYLOR, CHARLES Out: McGOVERN, DAVID					
				Sub In: McGOVERN, DAVID Out: TAYLOR, DOMINICK					
				Sub In: TAYLOR, CHARLES Out: McGOVERN, DAVID					
				Sub In: McGOVERN, DAVID Out: TAYLOR, DOMINICK					
				Sub In: TAYLOR, CHARLES Out: McGOVERN, DAVID					
				Sub In: McGOVERN, DAVID Out: TAYLOR, DOMINICK					
				Sub In: TAYLOR, CHARLES Out: McGOVERN, DAVID					
				Sub In: McGOVERN, DAVID Out: TAYLOR, DOMINICK					
				Sub In: TAYLOR, CHARLES Out: McGOVERN, DAVID					
				Sub In: McGOVERN, DAVID Out: TAYLOR, DOMINICK					
				Sub In: TAYLOR, CHARLES Out: McGOVERN, DAVID					
				Sub In: McGOVERN, DAVID Out: TAYLOR, DOMINICK					
				Sub In: TAYLOR, CHARLES Out: McGOVERN, DAVID					
				Sub In: McGOVERN, DAVID Out: TAYLOR, DOMINICK					
				Sub In: TAYLOR, CHARLES Out: McGOVERN, DAVID					
				Sub In: McGOVERN, DAVID Out: TAYLOR, DOMINICK					
				Sub In: TAYLOR, CHARLES Out: McGOVERN, DAVID					
				Sub In: McGOVERN, DAVID Out: TAYLOR, DOMINICK					
				Sub In: TAYLOR, CHARLES Out: McGOVERN, DAVID					
				Sub In: McGOVERN, DAVID Out: TAYLOR, DOMINICK					
				Sub In: TAYLOR, CHARLES Out: McGOVERN, DAVID					
				Sub In: McGOVERN, DAVID Out: TAYLOR, DOMINICK					
				Sub In: TAYLOR, CHARLES Out: McGOVERN, DAVID					
				Sub In: McGOVERN, DAVID Out: TAYLOR, DOMINICK					
				Sub In: TAYLOR, CHARLES Out: McGOVERN, DAVID					
				Sub In: McGOVERN, DAVID Out: TAYLOR, DOMINICK					
				Sub In: TAYLOR, CHARLES Out: McGOVERN, DAVID					
				Sub In: McGOVERN, DAVID Out: TAYLOR, DOMINICK					
				Sub In: TAYLOR, CHARLES Out: McGOVERN, DAVID					
				Sub In: McGOVERN, DAVID Out: TAYLOR, DOMINICK					
				Sub In: TAYLOR, CHARLES Out: McGOVERN, DAVID					
				Sub In: McGOVERN, DAVID Out: TAYLOR, DOMINICK					
				Sub In: TAYLOR, CHARLES Out: McGOVERN, DAVID					
				Sub In: McGOVERN, DAVID Out: TAYLOR, DOMINICK					
				Sub In: TAYLOR, CHARLES Out: McGOVERN, DAVID					
				Sub In: McGOVERN, DAVID Out: TAYLOR, DOMINICK					
				Sub In: TAYLOR, CHARLES Out: McGOVERN, DAVID					
				Sub In: McGOVERN, DAVID Out: TAYLOR, DOMINICK					
				Sub In: TAYLOR, CHARLES Out: McGOVERN, DAVID					
				Sub In: McGOVERN, DAVID Out: TAYLOR, DOMINICK					
				Sub In: TAYLOR, CHARLES Out: McGOVERN, DAVID					
				Sub In: McGOVERN, DAVID Out: TAYLOR, DOMINICK					
				Sub In: TAYLOR, CHARLES Out: McGOVERN, DAVID					
				Sub In: McGOVERN, DAVID Out: TAYLOR, DOMINICK					
				Sub In: TAYLOR, CHARLES Out: McGOVERN, DAVID					
				Sub In: McGOVERN, DAVID Out: TAYLOR, DOMINICK					
				Sub In: TAYLOR, CHARLES Out: McGOVERN, DAVID					
				Sub In: McGOVERN, DAVID Out: TAYLOR, DOMINICK					
				Sub In: TAYLOR, CHARLES Out: McGOVERN, DAVID					
				Sub In: McGOVERN, DAVID Out: TAYLOR, DOMINICK					
				Sub In: TAYLOR, CHARLES Out: McGOVERN, DAVID					
				Sub In: McGOVERN, DAVID Out: TAYLOR, DOMINICK					
				Sub In: TAYLOR, CHARLES Out: McGOVERN, DAVID					
				Sub In: McGOVERN, DAVID Out: TAYLOR, DOMINICK					
				Sub In: TAYLOR, CHARLES Out: McGOVERN, DAVID					
				Sub In: McGOVERN, DAVID Out: TAYLOR, DOMINICK					
				Sub In: TAYLOR, CHARLES Out: McGOVERN, DAVID					
				Sub In: McGOVERN, DAVID Out: TAYLOR, DOMINICK					
				Sub In: TAYLOR, CHARLES Out: McGOVERN, DAVID					
				Sub In: McGOVERN, DAVID Out: TAYLOR, DOMINICK					
				Sub In: TAYLOR, CHARLES Out: McGOVERN, DAVID					
				Sub In: McGOVERN, DAVID Out: TAYLOR, DOMINICK					
				Sub In: TAYLOR, CHARLES Out: McGOVERN, DAVID					
				Sub In: McGOVERN, DAVID Out: TAYLOR, DOMINICK					
				Sub In: TAYLOR, CHARLES Out: McGOVERN, DAVID					
				Sub In: McGOVERN, DAVID Out: TAYLOR, DOMINICK					
				Sub In: TAYLOR, CHARLES Out: McGOVERN, DAVID					
				Sub In: McGOVERN, DAVID Out: TAYLOR, DOMINICK					
				Sub In: TAYLOR, CHARLES Out: McGOVERN, DAVID					
				Sub In: McGOVERN, DAVID Out: TAYLOR, DOMINICK					
				Sub In: TAYLOR, CHARLES Out: McGOVERN, DAVID					
				Sub In: McGOVERN, DAVID Out: TAYLOR, DOMINICK					

OFFICIAL NFSHS BASKETBALL BOX SCORE: * OFFICIAL FIRST HALF *
 Date: 03-18-95 Site:BOYS' SWEET 16, LEXINGTON

VISITORS (Last Name, First)

NO.	NAME	Tot FG	FGA	3-POINT		FT	FTA	Rebounds			PF	TP	A	TO	BLK	S	TIME
				FG	FGA			OFF	DEF	TOT							
32	NELSON, GILWAN	3	6	0	1	3	3	1	1	2	0	9	0	0	0	1	11:15
43	HOOVER, SHAWN	2	4	0	0	1	4	4	2	6	2	5	0	1	0	0	7:57
42	LOCKHART, MIKE	0	3	0	0	0	0	3	2	5	3	0	0	1	2	0	4:18
15	TAYLOR, CHARLES	1	6	0	3	0	0	1	0	1	1	2	4	4	0	0	14:09
23	TAYLOR, DOMINICK	0	0	0	0	0	0	0	0	0	0	0	0	1	0	0	5:51
30	IVORY, WILLIE	0	3	0	2	1	2	1	0	1	0	1	1	0	0	0	10:13
25	MIMS, LARON	1	2	0	0	0	0	0	2	2	0	2	0	0	0	1	8:19
31	BEDFORD, GREG	1	1	0	0	1	1	0	0	0	0	3	0	0	1	1	6:11
21	FEY, BRANDON	0	1	0	0	0	0	1	0	1	1	0	0	1	0	0	5:11
10	MCGOVERN, DAVID	2	3	1	2	0	0	1	0	1	0	5	0	1	0	0	6:36
TEAM REBOUNDS (INCLUDED IN TOTALS)																	
TOTALS		10	29	1	8	6	10	12	7	19	7	27	5	9	3	3	80

Percentages: HALF----- FG 10/29 34.5% 3-PT. 1/8 12.5% FT 6/10 60.0%
 Period 1 5/17 29.4% 0/4 0.0% 2/2 100.0%
 Period 2 5/12 41.7% 1/4 25.0% 4/8 50.0%

HOME (Last Name, First)

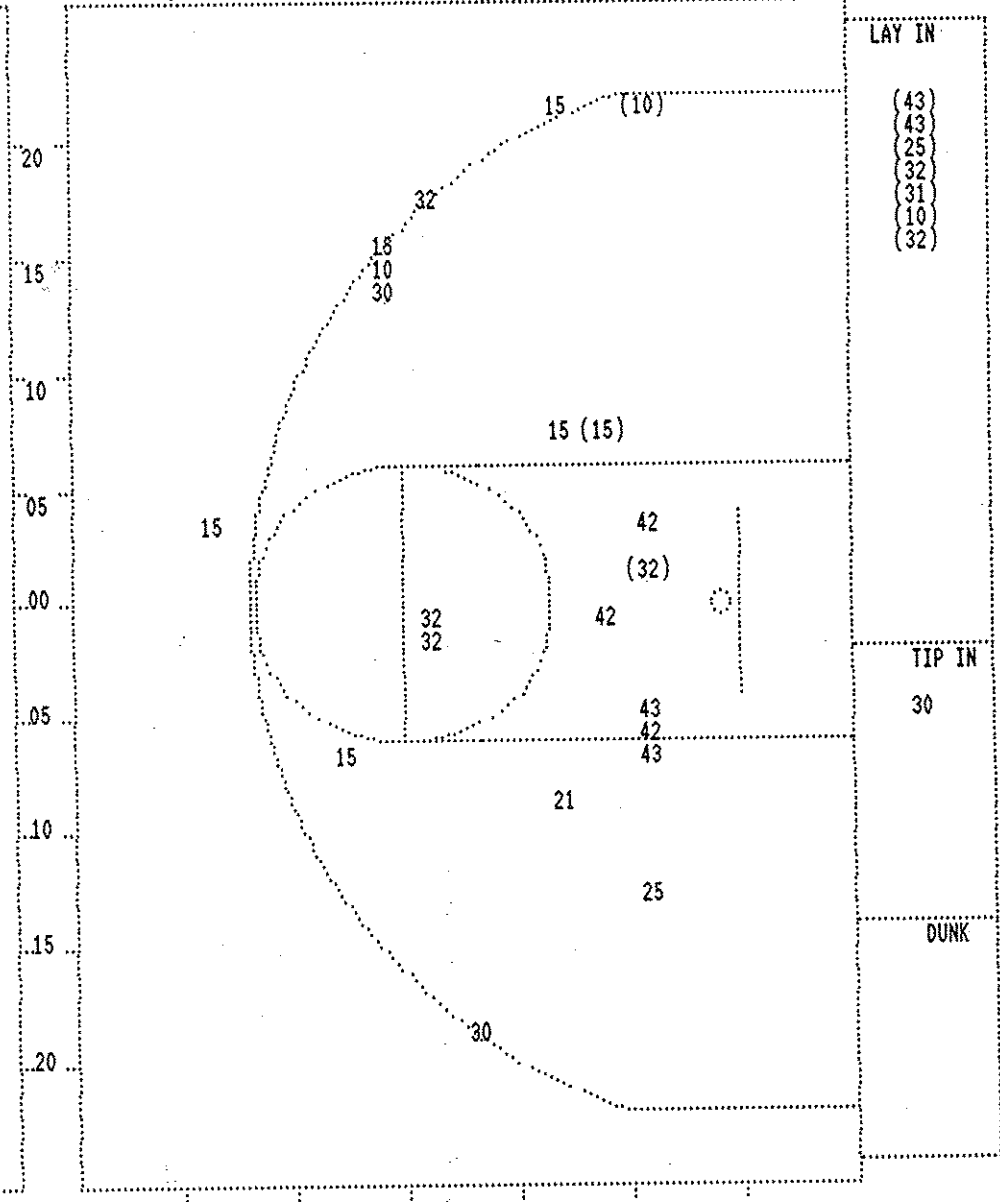
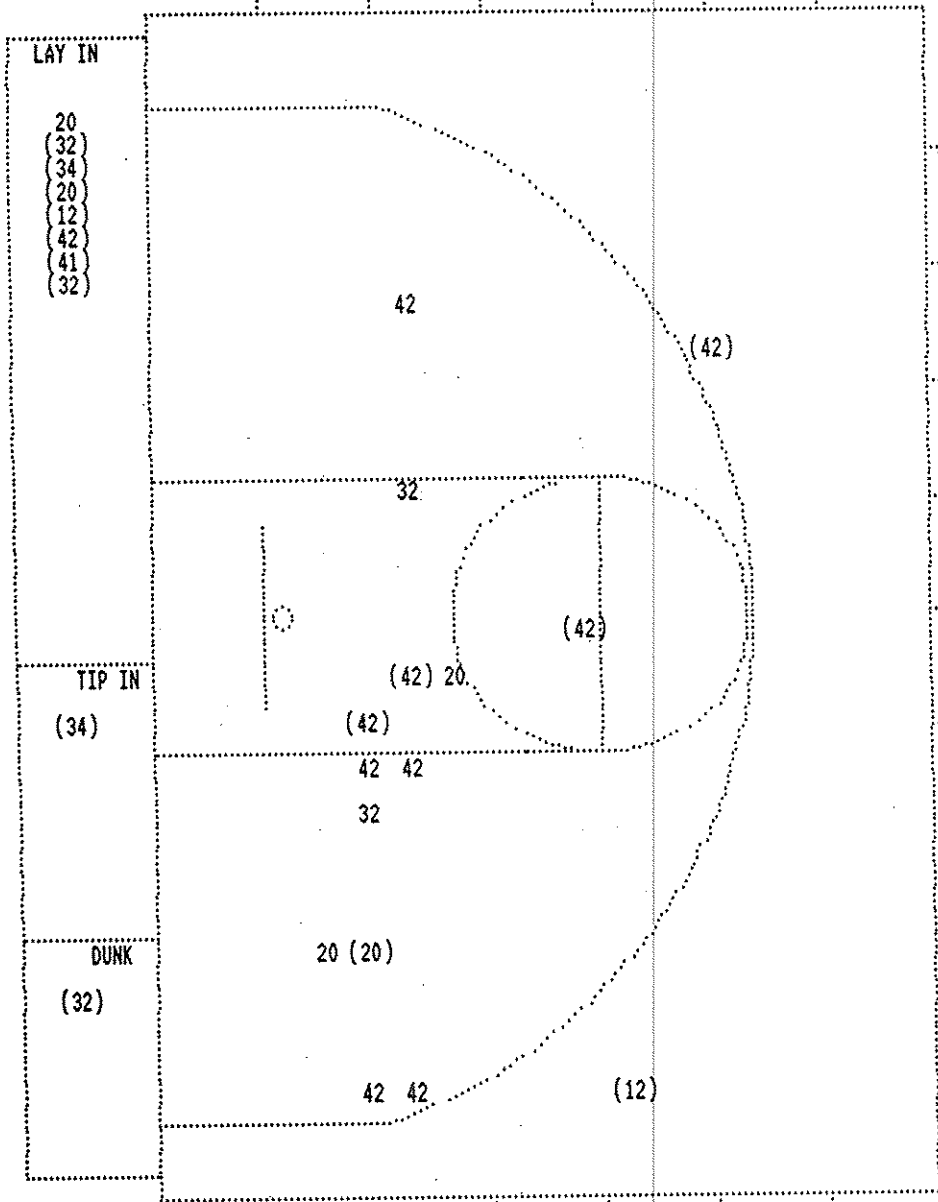
NO.	NAME	Tot FG	FGA	3-POINT		FT	FTA	Rebounds			PF	TP	A	TO	BLK	S	TIME
				FG	FGA			OFF	DEF	TOT							
34	WHITWORTH, JARED	2	2	0	0	0	0	1	1	2	2	4	3	3	1	2	11:13
42	SILLS, JAY	5	10	1	3	0	0	1	2	3	2	11	2	2	0	0	16:00
32	MATTINGLY, ADAM	3	5	0	0	1	1	0	4	4	1	7	3	1	0	1	13:05
12	PAYNE, BRADLEY	2	2	1	1	0	0	0	0	0	0	5	1	0	0	0	15:40
20	CRITCHELOW, PAT	2	5	0	0	0	0	1	2	3	2	4	2	1	0	1	16:00
41	WILLIAMS, CARL	1	1	0	0	0	0	0	0	0	0	2	0	1	0	0	5:07
50	CALISI, JON	0	0	0	0	0	0	0	0	0	0	0	0	0	0	0	2:55
TEAM REBOUNDS (INCLUDED IN TOTALS)																	
TOTALS		15	25	2	4	1	1	3	9	12	7	33	11	8	1	4	80

Percentages: HALF----- FG 15/25 60.0% 3-PT. 2/4 50.0% FT 1/1 100.0%
 Period 1 8/16 50.0% 2/2 100.0% 1/1 100.0%
 Period 2 7/9 77.8% 0/2 0.0% 0/0 0.0%

OFFICIALS: Glenn Brown, Roger Cross, Alt-Tom Hummell SCORE BY PERIODS
 Technicals: None PLEASURE RIDGE PARK 12 15 = 27
 BRECKINRIDGE COUNTY 19 14 = 33

Attendance:

COMMENTS: POINTS OFF TURNOVERS SECOND CHANCE POINTS
 PLEASURE RIDGE PARK 6 BRECKINRIDGE COUNTY 9 PLEASURE RIDGE PARK 5 BRECKINRIDGE COUNTY 2
 Produced by the KHSAA SWEET 16 Stat Crew with FINAL III - a Product of Stone Consulting (606)273-3941



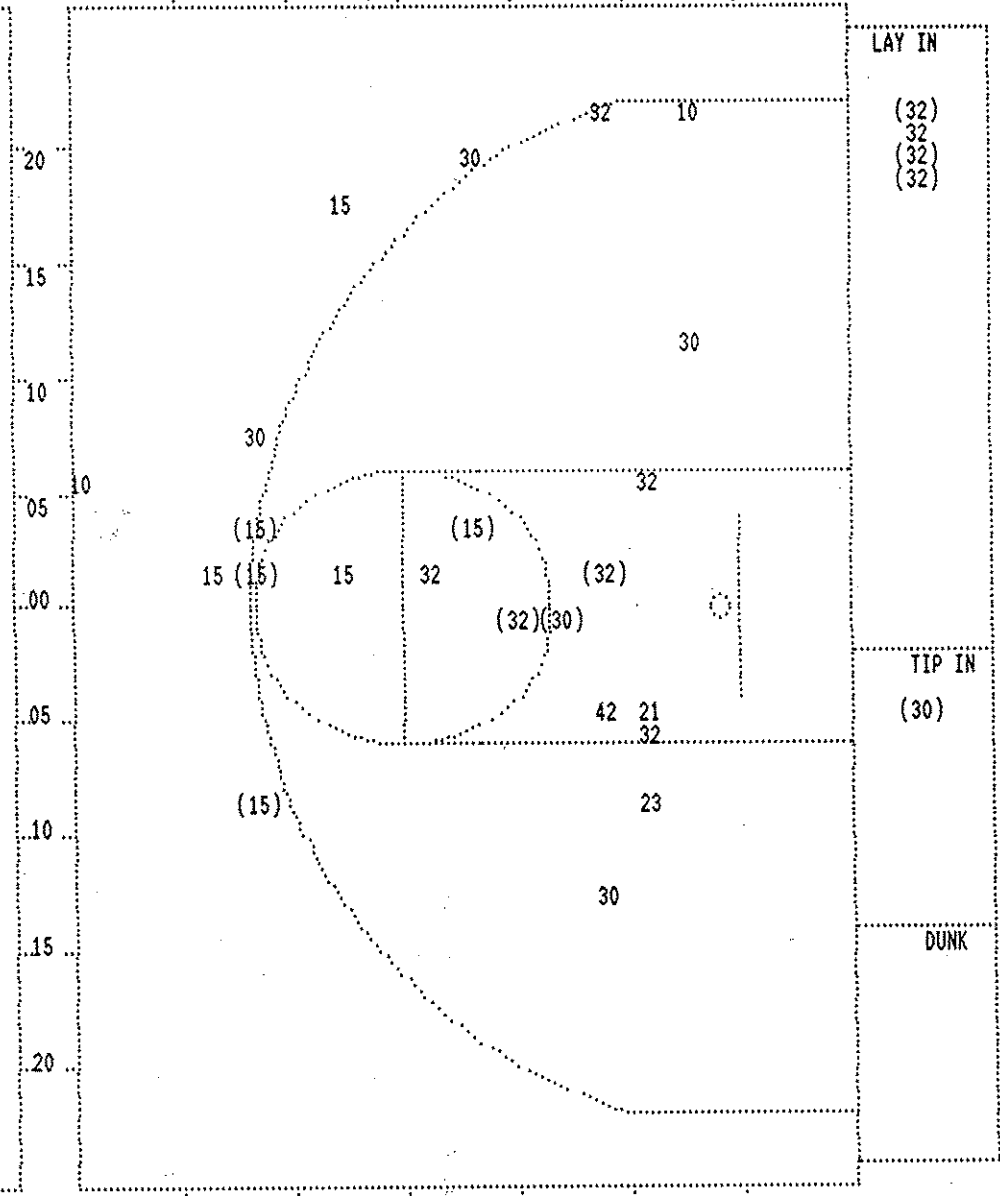
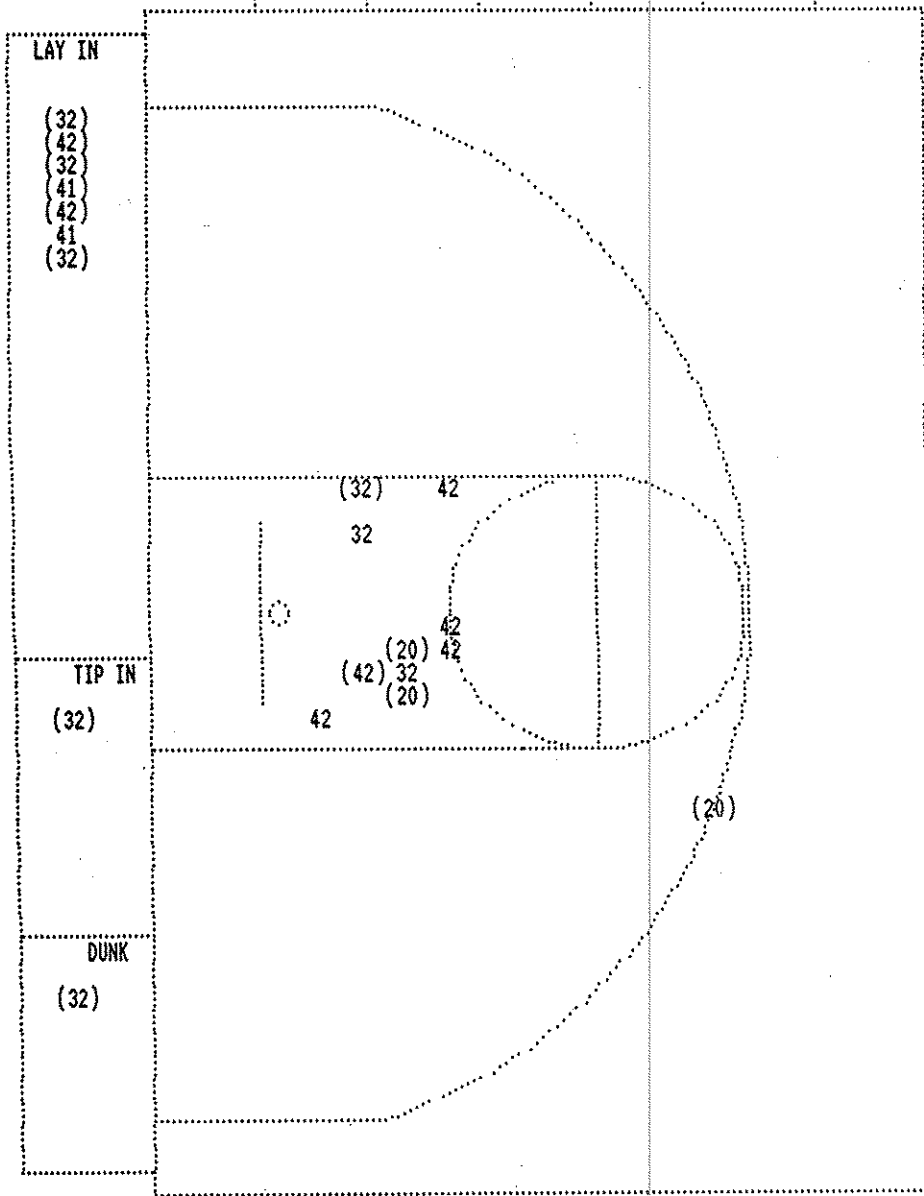
BRECKINRIDGE COUNTY					
Player					
34 - WHITWORTH	2 / 2	100.0%	41 - WILLIAMS	1 / 1	100.0%
42 - SILLS, JAY	5 / 10	50.0%			
32 - MATTINGLY	3 / 5	60.0%			
12 - PAYNE, BRA	2 / 2	100.0%			
20 - CRITCHELOW	2 / 5	40.0%			
Layups	1-9 Ft	10-15 Ft	Over 15 Ft	3 Pointers	Total
9 / 10	2 / 7	2 / 4		2 / 4	15 / 25
90.0%	28.6%	50.0%		50.0%	60.0%

PLEASURE RIDGE PARK					
Player			Player		
32 - NELSON, GI	3 / 6	50.0%	21 - FEY, BRAND	0 / 1	0.0%
43 - HOOVER, SH	2 / 4	50.0%	25 - HINS, LaRO	1 / 2	50.0%
42 - LOCKHART	0 / 3	0.0%	30 - IVORY, WIL	0 / 3	0.0%
15 - TAYLOR, CH	1 / 6	16.6%	31 - BEDFORD, G	1 / 1	100.0%
10 - McGOVERN	2 / 3	66.6%			
Layups	1-9 Ft	10-15 Ft	Over 15 Ft	3 Pointers	Total
7 / 8	2 / 7	0 / 5	0 / 1	1 / 8	10 / 29
87.5%	28.6%	0.0%	0.0%	12.5%	34.5%

Player	Team	BRECKINRIDGE COUNTY	Time	Score	PLEASURE RIDGE PARK	Player	Team
WILLIAMS, CARL		MATTINGLY, MATT, MATTINGLY, ADAM, CRITCHELOW, PAT, SILLS, JAY			NELSON, GILWAN, HOOVER, SHAWN, LOCKHART, MIKE, TAYLOR, CHARLES, TAYLOR, DOMINICK		
		Sub In: PAYNE, BRADLEY Out: MATTINGLY, MATT	4 7:24		Ball to PANTHERS		
2	6	Foul on PAYNE, BRADLEY	4 7:24		Foul on HOOVER, SHAWN	3	4
			4 6:48				
4	7	Foul on SILLS, JAY	4 6:48	51-40*	HOOVER, SHAWN, 2 Free Throws made both	3-6	50.0% 10-16 62.5%
			4 6:35				
8-16	50.0%	24-40 60.0%	4 6:35	51-42*	LOCKHART, MIKE, 1 & Bonus made both	2-2	100% 12-18 66.6%
		3 ft Lane Jump shot by SILLS, JAY	4 6:21	*53-42			
3	8	Player Control Foul on CRITCHELOW, PAT	4 6:12	53-44*	Follow Layup by NELSON, GILWAN	5-11	45.4% 15-43 34.8%
			4 5:52				
			4 5:52		Sub In: IVORY, WILLIE Out: HOOVER, SHAWN		
			4 5:52		Sub In: MIMS, LaRON Out: NELSON, GILWAN		
		REB: 19 A: 14 BLK: 3 TO: 12 PF: 8	4 5:52		REB: 27 A: 7 BLK: 4 TO: 12 PF: 4		
		S: 6 FT: 2-3 66.6% FG: 24-40 60.0%	No. 1 BRECKINRIDGE COUNTY TIME - O U T		S: 5 FT: 12-18 66.6% FG: 15-43 34.8%		
			4 5:39	53-47*	3 pt 20 ft Circle Jump shot by TAYLOR, CHARLES	4-10	40.0% 16-44 36.3%
					Assist by LOCKHART, MIKE	1	8
			4 5:15		Foul on MIMS, LaRON	1	5
			4 5:09		Foul on TAYLOR, DOMINICK	2	6
			4 5:09				
6-10	60.0%	25-42 59.5%	4 4:44	*55-47			
3	9	Foul on PAYNE, BRADLEY	4 4:29				
		Sub In: WHITWORTH, JARED Out: WILLIAMS, CARL	4 4:29		Sub In: NELSON, GILWAN Out: MIMS, LaRON		
		Follow Tip by MATTINGLY, ADAM	4 4:29	55-49*	LOCKHART, MIKE, 2 Free Throws made both	4-4	100% 14-20 70.0%
			4 4:24		Foul on TAYLOR, CHARLES	4	7
2-2	100%	4-5 80.0%	4 4:24	*57-49			
		WHITWORTH, JARED, 1 & Bonus made both	4 4:15	57-51*	8 ft Lane Jump shot by NELSON, GILWAN	6-12	50.0% 17-46 36.9%
					Assist by TAYLOR, DOMINICK	1	9
			4 3:42	*59-51			
			4 3:22				
			4 3:22		TAYLOR, DOMINICK, 1 & Bonus missed 1st	1-3	33.3% 14-21 66.6%
			4 3:20		Sub In: McGOVERN, DAVID Out: TAYLOR, DOMINICK		
			4 3:20				
		Sub In: MATTINGLY, ADAM Out: WILLIAMS, CARL	4 3:12	59-53*	Follow Tip by IVORY, WILLIE	2-6	33.3% 18-50 36.0%
8-12	66.6%	27-44 61.3%	4 2:52	*61-53			
		6 ft Lane Turnaround by MATTINGLY, ADAM	4 2:36		Player Control Foul on IVORY, WILLIE	1	8
			4 1:57		Foul on McGOVERN, DAVID	1	9
			4 1:57		Sub In: MIMS, LaRON Out: LOCKHART, MIKE		
3-4	75.0%	6-7 85.7%	4 1:57	*63-53			
4	11	Foul on CRITCHELOW, PAT	4 1:44		Sub In: FEY, BRANDON Out: MIMS, LaRON		
			4 1:28				
			4 1:28	63-55*	FEY, BRANDON, 1 & Bonus made both	3-4	75.0% 16-23 69.5%
			4 1:23		Foul on IVORY, WILLIE	2	10
4-6	66.6%	7-9 77.7%	4 1:23	*64-55			
		CRITCHELOW, PAT, 1 & Bonus made 1st missed 2nd	4 1:11		Foul on FEY, BRANDON	2	11
2-2	100%	9-11 81.8%	4 1:11	*66-55			
		PAYNE, BRADLEY, 1 & Bonus made both	4 0:59	66-57*	Follow Layup by NELSON, GILWAN	7-15	46.6% 19-53 35.8%
			4 0:53		Foul on NELSON, GILWAN	1	12
1-2	50.0%	9-12 75.0%	4 0:53				
		MATTINGLY, ADAM, 1 & Bonus missed 1st	4 0:41		Foul on FEY, BRANDON	3	13
2-2	100%	11-14 78.5%	4 0:41	*68-57			
5	12	Foul on WHITWORTH, JARED	4 0:35	68-59*	4 ft Lane Turnaround by NELSON, GILWAN	8-16	50.0% 20-55 36.3%
			4 0:35				

2nd Half Play by Play (continued)

Player	Team	BRECKINRIDGE COUNTY	Time	Score	PLEASURE RIDGE PARK	Player	Team
		Sub In: WILLIAMS, CARL Out: WHITWORTH, JARED	4 0:35				
9-13	69.2%	28-45 62.2%	4 0:35	68-60*	NELSON, GILWAN , 1 Free Throw made	4-4	100% 17-24 70.8%
3		16	4 0:28	*70-60			
		Dunk Off Fast Break by MATTINGLY, ADAM Assist by SILLS, JAY	4 0:06	70-63*	3 pt 22 ft Right Angle Jump shot by TAYLOR, CHARLES	5-13	38.4% 21-57 36.8%



BRECKINRIDGE COUNTY					
Player					
42 - SILLS, JAY	3 / 7	42.8%			
32 - MATTINGLY,	6 / 8	75.0%			
20 - CRITCHELOW	3 / 3	100.0%			
41 - WILLIAMS,	1 / 2	50.0%			
Layups	1-9 Ft	10-15 Ft	Over 15 Ft	3 Pointers	Total
8 / 9	4 / 10			1 / 1	13 / 20
88.9%	40.0%			100.0%	65.0%

PLEASURE RIDGE PARK					
Player					
32 - NELSON, GI	5 / 10	50.0%	21 - FEY, BRAND	0 / 1	0.0%
42 - LOCKHART,	0 / 1	0.0%	30 - IVORY, WIL	2 / 6	33.3%
15 - TAYLOR, CH	4 / 7	57.1%			
23 - TAYLOR, DOM	0 / 1	0.0%			
10 - McGOVERN,	0 / 2	0.0%			
Layups	1-9 Ft	10-15 Ft	Over 15 Ft	3 Pointers	Total
4 / 5	3 / 8	1 / 4	0 / 1	3 / 10	11 / 28
80.0%	37.5%	25.0%	0.0%	30.0%	39.3%